

# Curtin Springs Station Northern Territory



## **Outback hospitality – The way you wish it could be all the time.**

Curtin Springs is a working cattle station and Wayside Inn located on the Lasseter Hwy just 85km east of Yulara, at the edge of Ayers Rock/Olgas National Park.

The Severin family extend the unique hospitality that has made them a legend in the NT. The family took over in 1956 and still operate the station today. They installed petrol pumps and a small store to help Len Tuit start tourism in the Ayers Rock area. Looking at the area now it's hard to believe that the Severin's only saw 6 people in their first year here and they have watched the tourism industry grow ever since.

The Severin's offer you a real taste of the outback, with modern facilities and an atmosphere that people come back for. Many people base themselves at Curtin Springs and explore the Ayers Rock and Kings Canyon areas.

# General Information

This information pack is to assist in explaining Curtin Springs to potential employees.

## Requirements

All staff must have a valid current working visa, an Australian tax file number and all staff **MUST** have a **Responsible Serving of Alcohol certificate**. Employment will not be offered if these three criteria are not met.

## Distances;

360km to Alice Springs (3-4 hours drive)

85 km to Yulara (the resort area at the entrance to the Ayers Rock National Park). There a small shopping centre at Yulara, supermarket, newsagent, post office and tourist retail shops.

## Set-up.

Most of the employment at Curtin Springs is related to the Wayside Inn and the 'front of house' services we offer.

## We provide

Petrol, meals, bar, refreshments, tours, accommodation (27 rooms) and a camp ground with powered and unpowered sites.

## Hours of business:

365 days a year

**Open** 7am

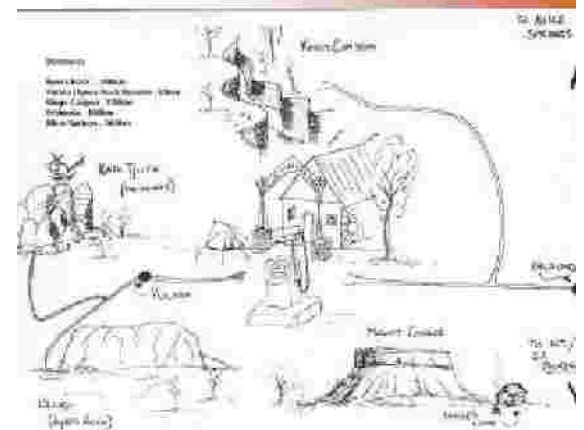
**Close** When customers finish drinking. (approximately 10-11pm, but it can sometimes be dawn!!)

## Busy time of the year.

Tourists visit us all year, but the busiest time is June to October.

## Enterprise Agreements –Pay structure

All staff are covered by Enterprise Agreements.



# Areas of staffing

## Areas of staffing.

**The kitchen.** Our kitchen hand positions provide support to the cook, do all kitchen front of house/customer work, food preparation, and clean up. These shifts can be a straight shift or split shifts. Kitchen staff prepare 3 meals for staff, (all staff get their own breakfasts)

**The shop** (with various shifts that start at 7am, 8am, 10, 12am, 3pm or 4pm depending on the time of year.) The shop is responsible for all petrol sales, soft drinks, light snacks, souvenirs, alcohol sales, and accommodation check in/out.

**Housekeeping.** We have 27 rooms, with often full house during the peak season. Increasingly we are offering dinner/bed/breakfast to tour groups. We generally have 1 or 2 people in housekeeping, depending on the time of year. All units have daily cleaning requirements as well as a structured monthly cleaning cycle. Housekeeping staff do all laundry.

## Outside – Gardener

**Outside - Handyman.** Depending on the time of year and the skills different people have we can have 1 or 2 outdoor staff responsible for rubbish, camping ground toilets/showers, all rubbish, managing the water and sewerage systems as well as any handyman/maintenance jobs that need doing.

**Station Hands.** Curtin Springs (the cattle station) is 1,028,960 acres in size. Family members and experienced staff are responsible for the cattle work. Casual inexperienced workers are not employed for station work.

**Extras.** At times there are extra staff if there are major projects underway.



# Staff Amenities

## Staff amenities.

All staff generally live on site. Staff are provided with a single room accommodation. There is a difference between long term staff accommodation and short term staff accommodation. Allocation will depend on availability.

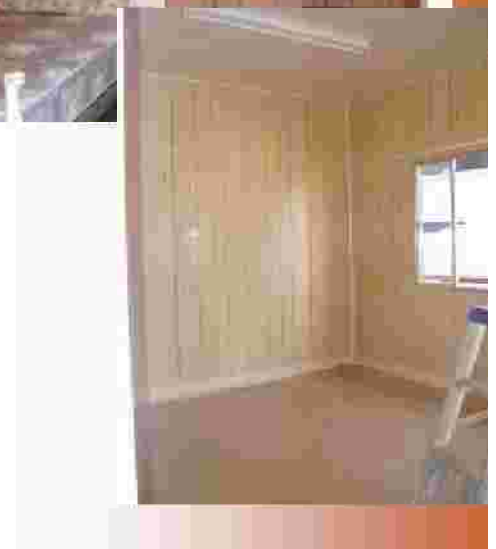
- All rooms have air conditioners/heaters.
- Linen is available.
- Shared bathrooms and toilets.
- 4 meals a day (morning tea, lunch and dinner are cooked and provided for you. Due to the variation in starting times, breakfast items are available, but it's up to you to cook them).
- Only one TV station is received. Staff provide their own TVs and DVDs.
- A swimming pool is available for staff and family only. It is not available for guests.
- If staff have their own accommodation, sites are available near staff quarters for power plug in.
- Washing machines and washing powder provided.
- Wireless internet access is available to staff at 1/2 the public rate.

## Roster structure

Staff are required to work across a number of areas and shifts. Rosters are usually set and changed on a weekly basis.

## Pay details.

- Staff are paid weekly, into a nominated bank account.
- All staff from overseas **must** have a relevant work visa and Tax File Numbers.
- Board and quarters are charged weekly.



# Other details.

## Gardens

The gardens usually surprises most people. Good bores mean we can have green grass and lovely gardens all around the homestead area.

## Aviaries

The large aviaries house a range of native birds and parrots. The tourist really enjoy then.



**Mt Conner** – Located on Curtin Springs Station, is 3 times as big around the base as Ayers Rock and is often referred to as the “Forgotten Wonder”.

Tours run from the homestead out to Mt Conner and around the station.



# Employment Enquiries



## Contact for staffing.

**Lyndee Severin**  
**Curtin Springs Station**  
**Via Alice Springs NT 0872**

Phone: 08 89562906  
Fax: 08 89562934  
Email: [enquiries@curtinsprings.com](mailto:enquiries@curtinsprings.com)  
Website: [www.curtinsprings.com](http://www.curtinsprings.com)