



## **Curtin Springs** Outback hospitality – The way you wish it could be all the time.

Curtin Springs is a working cattle station and wayside inn located on the Lasseter Hwy just 85km east of Yulara, at the edge of the Ayers Rock/Olgas National Park.

The Severin family extend the unique hospitality that has made them a legend in the NT. The family took over in 1956 and still operate the station today. They installed petrol pumps and a small store to help Len Tuit start tourism in the Ayers Rock area. Looking at the area now it's hard to believe that the Severins' only saw 6 people in their first year here and they have watched the tourism industry grow ever since.

The Severin family offer you a real taste of the outback, with modern facilities and an atmosphere that people come back for.

### **We can offer a variety of options for tour groups.**

- Breakfast, lunch, dinner or morning/afternoon tea.
- Dinner, bed and breakfast
- Bed only, provide your own meals around the free BBQ area.

**Tours of the station, the Amadeus Salt Lake Chain and Mt Conner (the Forgotten Wonder) are also available.**

*We will do our best to accommodate your specific tour needs.*

**An affordable option - so base yourself at Curtin Springs and explore the Ayers Rock and Kings Canyon areas.**

Curtin Springs  
Lasseter Highway, NT  
Phone (08) 89562906  
Fax (08) 89562934  
Email: [curtinsprings@bigpond.com.au](mailto:curtinsprings@bigpond.com.au)  
[www.curtinsprings.com](http://www.curtinsprings.com)



## Curtin Springs

### Accommodation information

***Prices valid 1/1/10 – 31/12/10 – subject to change without notice***

**Accommodation for tour groups is \$72.50 per person/twin share (minimum) in Ensuite accommodation or \$45 per person/twin share in budget accommodation.**

We currently have 17 Ensuite rooms. All rooms are on ground level; most have 2 or 3 steps to the door.

- These rooms have tea/coffee making facilities
- All have reverse cycle air conditioners, doonas, bedcovers, blankets (in season) and all linen is provided.

Room Type	Number of Rooms	Double Beds	Single Beds	Total beds
Double Rooms	4	1	-	8
Twin Rooms	4	-	2	8
Triple Rooms	5	1	1	15
Quad Rooms	2	-	4	8
Family Rooms	2	1	4	12

We also have 10 budget rooms with shared bathroom facilities. All rooms are on ground level with 3 steps.

- All linen is provided.
- All have reverse cycle air conditioners, doonas/bedcovers, blankets (in season) and all linen is provided.

Room Type	Number of Rooms	Double Beds	Single Beds	Total beds
Double Rooms	5	1	-	10
Twin Rooms	5	-	2	10



## Curtin Springs Meal information – examples only.

**We will do our best to meet the needs of your group.  
For Tour Groups or 10 or more PAX only.**

Breakfast	Lunch	Dinner
<p style="text-align: center;"><b>Cooked breakfast</b></p> <ul style="list-style-type: none"> <li>• Bacon, eggs, tomato, toast</li> <li>• Tea/coffee</li> <li>• <b>\$17.50 per head</b></li> </ul> <p style="text-align: center;"><b>Light breakfast</b></p> <ul style="list-style-type: none"> <li>• Cereal</li> <li>• Toast</li> <li>• Fruit salad</li> <li>• Tea/coffee</li> <li>• <b>\$12.50 per head</b></li> </ul>	<p style="text-align: center;"><b>Burger Option</b></p> <ul style="list-style-type: none"> <li>• Works Burger, plated with chips</li> <li>• Tea/coffee</li> <li>• <b>\$16 per head</b></li> </ul> <p style="text-align: center;"><b>Sandwiches</b></p> <ul style="list-style-type: none"> <li>• Assorted sandwiches, ready to take away or eat under bough shed</li> <li>• <b>\$7.00 per head</b></li> <li>• <b>(Tea/coffee \$1 per head)</b></li> </ul>	<p style="text-align: center;"><b>3 Course meal</b></p> <ul style="list-style-type: none"> <li>• Soup</li> <li>• A choice between two main courses.</li> <li>• Sweets</li> <li>• Tea/Coffee</li> <li>• <b>\$39 per head</b></li> </ul> <p style="text-align: center;"><b>2 Course meal</b></p> <ul style="list-style-type: none"> <li>• Soup or sweets</li> <li>• A choice between two main courses.</li> <li>• Tea/Coffee</li> <li>• <b>\$32 per head</b></li> </ul>
	<p style="text-align: center;"><b>Fresh Cold meat &amp; salad</b></p> <ul style="list-style-type: none"> <li>• Cold meat, salad &amp; condiments</li> <li>• Tea/coffee</li> <li>• <b>\$24.00 per head</b></li> </ul>	<p style="text-align: center;"><b>BBQ lunch/dinner</b></p> <ul style="list-style-type: none"> <li>• A selection of BBQ meats including sausages, hamburger and steak.</li> <li>• Salad selection, Bread/butter</li> <li>• Tea/coffee</li> <li>• <b>\$24.00 per head</b></li> </ul>
	<p style="text-align: center;"><b>Packed lunch</b></p> <ul style="list-style-type: none"> <li>• Sandwiches</li> <li>• In season fresh fruit</li> <li>• Cake/slice</li> <li>• <b>\$13.00 per head</b></li> </ul>	<p>Final prices will depend on specific requirements.</p>

**Most coaches do the sunset at the Rock and return for dinner. So dinner is timed for about an hour after sunset – which changes throughout the year.  
PRICES SUBJECT TO CHANGE WITHOUT NOTICE.**

### Meals

All meals are served under our 'Bough Shed', an outside eating area that is the original homestead.



## **Curtin Springs**

### **Additional information**

For Tour Groups or 10 or more PAX only.

**Dinner, Bed and Breakfast – Ensuite accommodation**

(3 course dinner, cooked breakfast)

**\$129 per head per night.** (\$101.50 per night for budget accommodation)

#### **Dietary requirements**

- To be provided closer to tour date

•

#### **Room allocations**

- Provided closer to tour date.
- Tour groups to provide the sharing arrangements (You will understand the dynamics of the group much better than
- Depending on your final numbers, some clients may be allocated to budget rooms.

#### **Coach captain and/or Hostess/Tourleader are FOC**

(with a min of 10 paying customers)

One room is available for tour staff, so they may be required to share a room or to use a budget room depending on space.

#### **Single supplement**

Single supplement will be \$72.50.00 per person per night.

#### **Room servicing**

If staying more than one night, all rooms will be given small service (towels changed if requested, bathroom wipe down and toiletries requirements topped up). Beds will not be changed or made.

#### **Pricing**

All prices are subject to change without notice. Please arrange to confirm prices 1 calendar month before group is due to arrive.

#### **Insurances**

By making a booking with Curtin Springs, you acknowledge you will hold current Public Liability Insurance (and all other relevant insurance) at the time the service is provided.



Spirit **E**motion **I**ntellect **T**ask

Come and **SEIT Outback Australia** with us,  
and we guarantee the tour of a lifetime



**Enjoy the quintessential Aussie Outback experience and absorb the ambiance of the Red Centre Without the crowds. Provide your group with something different!**

**SEIT Outback Australia** offers a unique and **exclusive** touring experience to Mt Conner. This is the quintessential Aussie Outback experience. This fascinating tour will introduce you to life in the desert. Mt Conner is surrounded by a working cattle station, providing the perfect habitat for kangaroos, wallabies, birds and reptiles. Learn geological mysteries surrounding this amazing mesa.



## Touring Options

- ✓ **Sunset Tours**
- ✓ **Mt Conner Bush Camping**
- ✓ **Private Charters**
- ✓ **Group Bookings**
- ✓ **Half Day Tours**
- ✓ **Specific requirements can be catered to**

**FOR MORE INFORMATION AND RESERVATIONS:**

**Ph: + 61 458 107777**

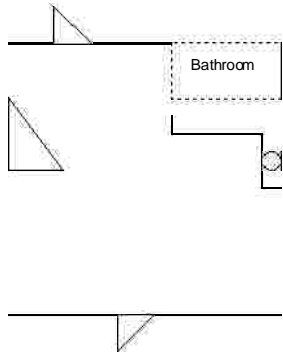
**Email: [bookings@seitoutbackaustralia.com.au](mailto:bookings@seitoutbackaustralia.com.au)**

**Web: [www.seitoutbackaustralia.com.au](http://www.seitoutbackaustralia.com.au)**

## Room Allocations

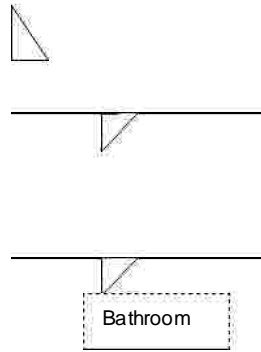
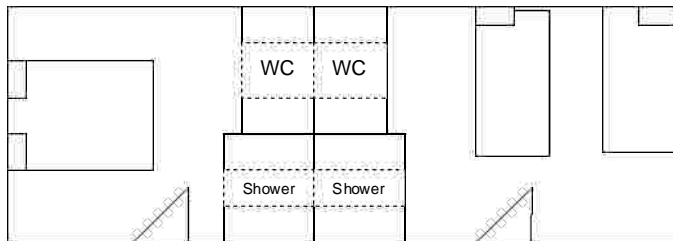
Name	No of people on shared basis	Room Number	Room type	Dietary requirement
	Double	1	Double-Budget	
	Double	2	Double-Budget	
	Double	3	Double-Budget	
	Double	4	Double-Budget	
	Double	5	Double-Budget	
	Twin	6	Twin – Budget	
	Twin	7	Twin – Budget	
	Twin	8	Twin – Budget	
	Twin	9	Twin – Budget	
	Twin	10	Twin – Budget	
	Twin or Double	11	Double+Single (E)	
	Twin or Triple or quad	12	4 Singles (E)	
	Twin or Double	14	Double+Single (E)	
	Twin or Triple or Quad	15	4 Singles (E)	
	Double or Twin	16	Double & Single (E)	
	Double or Twin	17	Double & Single (E)	
	Double or Twin	18	Double & Single (E)	
	Double	19	Double (E)	
	Twin	20	Twin (E)	
	Double	21	Double (E)	
	Twin	22	Twin (E)	
	Double	23	Double (E)	
	Twin	24	Twin (E)	
	Double	25	Double (E)	
	Twin	26	Twin (E)	
	Double, Twin, Triple, Quad	A	Double+4 Singles (E)	
	Double, Twin, Triple, Quad	B	Double+4 Singles (E)	

# ROOM CONFIGURATION CURTIN SPRINGS

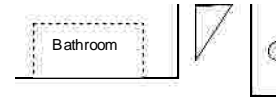


**Family Room  
X 2**  
Rooms A & B

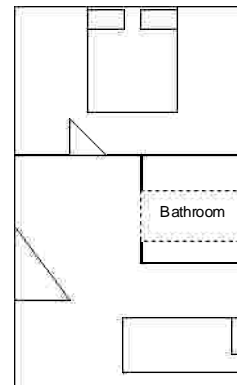
**Ensuite Rooms  
4 x double, 4 x twin**  
Rooms 19,21,23,25  
Rooms 20,22,24,26



**Ensuite Room  
X 2**  
Rooms 12 & 15

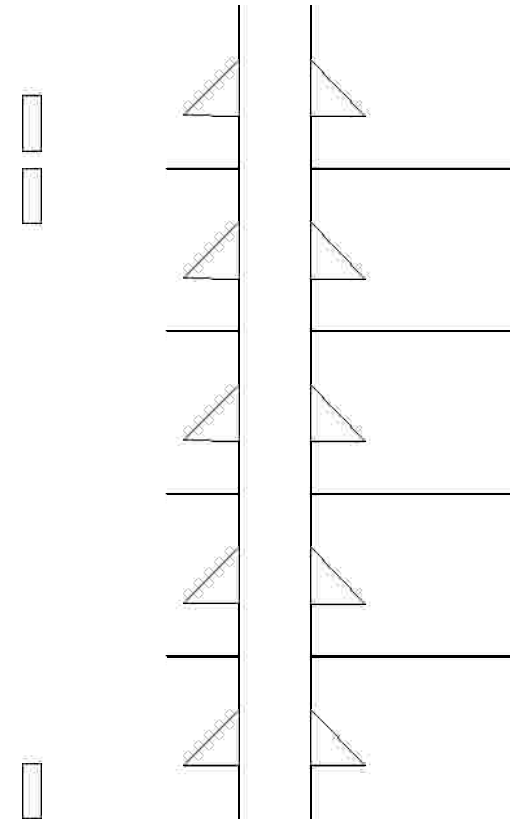


**Ensuite Room  
X 3**  
Rooms 16,17,18



**Ensuite Room  
X 2**  
Room 11 & 14

**These diagrams  
are not drawn  
exactly to scale.**



**Budget Rooms  
5 x double, 5 x twin**  
Shared Bathroom facilities  
Rooms 1 – 5, 6-10